



# Mr. Johnny Lee Ferry

AUG 4, 1934 - JAN 11, 2015



Scan to Visit



# Table of Contents

<b>Obituary</b> .....	Page 3
<b>Events</b> .....	Page 5
<b>Tribute Wall</b> .....	Page 6
<b>Media</b> .....	Page 7



## **Mr. Johnny Lee Ferry**

AUG 4, 1934 - JAN 11, 2015

**J**ohnny Lee Ferry, 80, peacefully passed away Sunday, January 11, 2015 at home surrounded by his family.

He leaves his wife of 61 years, Delores “Jeanne” (Dufford) Ferry; his daughter, Janice Ferry and grandchildren Brianne, William and Mathew; his son John David Ferry and grandchildren Rachel, Amy and Benjamin; his daughter Jill Ferry-Williams and grandchild Ashley; along with their spouses and great grandchildren; his sister Mildred O’Rear; numerous nieces, nephews, and friends.

Born in Muskogee, Oklahoma, the son of John and Louise Ferry, Johnny enjoyed telling stories of his early years as a child; quite mischievous, and somewhat Tom Sawyer-esque, making his own fun during the Great Depression. As he grew older Johnny worked odd jobs during the summer to help his momma with bills and extra things needed for school.

Johnny and Jeanne became high school sweethearts and were married in 1953. After graduating from Northeastern State, he took a job with Western Electric which took them all over the United States. They even received a trophy at their high school reunion for having lived in the most places.

In 1962, Johnny learned of a job opening in Houston, Texas that he knew would be an opportunity of a lifetime; the Space Program. When asked if he knew anything about computers, he said, “of course!”, then proceeded to check out all books he could find on computers, studying on the flight down and in the hotel room, prior to his interview the next day. He was hired on the spot. It was the most exciting time in the world, and he was a part of it!

During his many years with the Space Program, Johnny was also an active member of the OU Sooners Booster Club working closely with then OU coach Barry Switzer as a talent scout, visiting high school football games, and running tapes to Norman for Barry to view. It wasn't unusual for him to watch one of his daughters dance in



## Obituary

**Mr. Johnny Lee Ferry**

AUG 4, 1934 - JAN 11, 2015

the drill team half time, then hop a plane to get film to Mr. Switzer by Friday evening.

Johnny also pursued his passion for music. A self taught guitar player, he enjoyed playing in his bands at clubs, company picnics, and was even invited by Waylon Jennings to join him on his tour bus and 'hit a few cities'. One of his biggest regrets was not taking Waylon up on the offer, although they did sit on the bus and pick guitars for a few hours before he had to leave.

In addition to playing guitar, Johnny also enjoyed building houses. Forever mindful of the difficulties of growing up poor, Johnny was a wonderful provider for his family. Rental properties, Johnny's Steakhouse (made from an old Ellington Field army barrack), car washes, even working with Merrill Lynch as a stock broker.

After retiring, Johnny still enjoyed building rental properties, as well as watching his beloved OU Sooners. An avid fan, you could find him at most home games, or in front of the TV during college game days.

Johnny has been recognized with plaques and awards throughout his career for his many contributions to the Space Program.

Johnny's sense of humor, his laughter, his support and guidance, and his “true stories”, are so fondly missed by family and friends.

Services will be held Friday, January 16, 2015, 12:30pm at South Park Funeral Home in Pearland, Tx

[https://www.tributeslides.com/videos/embedded\\_video/D677LH4LJLR6PSC2](https://www.tributeslides.com/videos/embedded_video/D677LH4LJLR6PSC2)





# Events


**Mr. Johnny Lee Ferry**

AUG 4, 1934 - JAN 11, 2015

## Funeral Service


 **Friday**, January 16, 2015


 12:30 PM - 1:30 PM CT

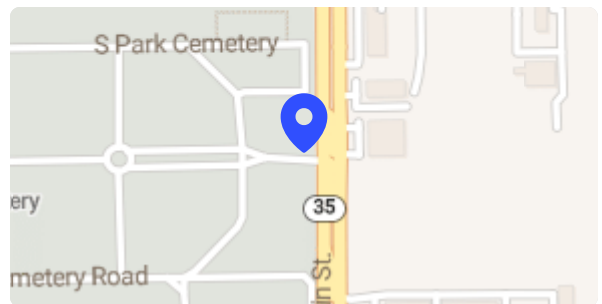
 **South Park Funeral Home and Crematory**  
1310 North Main Street, Pearland TX 77581



## Cemetery Details

 **South Park Cemetery**  
1310 North Main Street, Pearland TX 77581

 **(281) 509-9228**





## Tribute Wall

**Mr. Johnny Lee Ferry**

AUG 4, 1934 - JAN 11, 2015

JW

**Jill Ferry-Williams** sent a virtual gift in honor of Johnny.

I miss you. So very much. Your Jilly

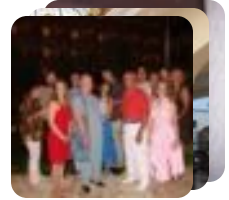
January 17 at 5:40 AM



JW

**Jill Ferry-Williams** shared an album called **New Album Name**.

January 15 at 1:09 PM



SP

**Sandy Price** lit a candle in honor of Johnny.

Johnny, I remember the day you walked thru the door to be and advisor. You were the only Financial Advisor that was always freezing and had to have a heater going all the time under you desk. Will miss you old buddy. We had some really nice times. May you rest in peace Sandy Price

January 14 at 5:18 AM



DC

**David Cheak** posted:

Johnny you will be missed by all. You truly were one of a kind. I'll never forget the story you told me about how you had an account with Kennedy that only held Walmart stock in it. When he mentioned to you that you were not very diversified, you proceeded to mention to Tom that you had two other accounts elsewhere. He was much relieved and proceeded to ask what was in them. You said, Walmart of course! Too funny. I will miss all our stories together. May you RIP. David

January 13 at 1:04 PM



## Media

**Mr. Johnny Lee Ferry**

AUG 4, 1934 - JAN 11, 2015



**Jill Ferry-Williams** shared 3 photos to the **New Album Name** album.

January 15 at 1:09 PM



Ferry Family Vacation Mexico 2007



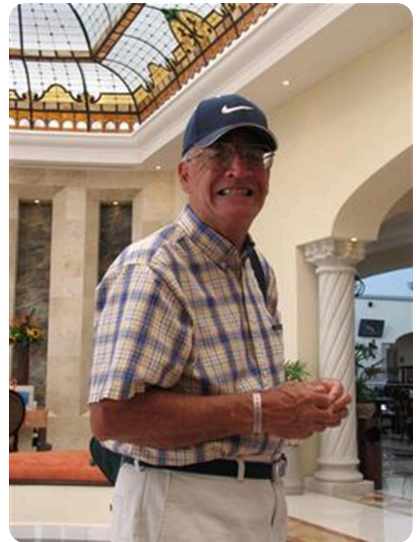
## Media

**Mr. Johnny Lee Ferry**

AUG 4, 1934 - JAN 11, 2015



Cutting a rug with his girls.



Headed to town to "make a deal."



## **Memories only last if you share them**

Join us in honoring Johnny by contributing to a collection of shared memories.



Scan to Visit

